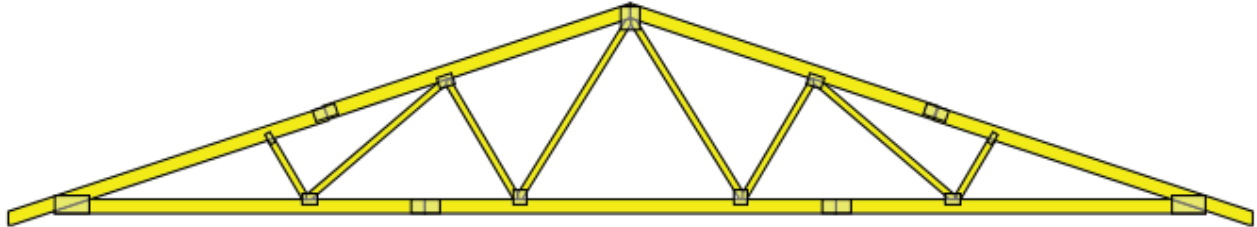


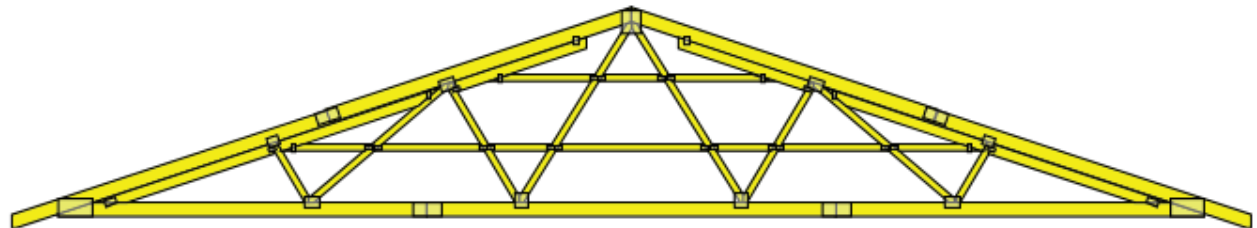
JOB ## J20-1479-A



Specification:

Height	90008	Shipping Weight	326.29
Span	490900	Nominal Volume	184.00
Center	50000	Loading	21.7-5.0-10.0-7.0
Top Chord Size	2x8	Bottom Chord Size	2x8
Top Chord Pitch	4	Bottom Chord Pitch	0
Left Overhang	20000	Right Overhang	20000
Left Stub	0	Right Stub	0
Left Cantilever	0	Right Cantilever	0
Splices	4	Joints	15
Ply	1	Sheathing Area	0.00

Quantity: 15



Specification:

Height	90008	Shipping Weight	451.19
Span	490900	Nominal Volume	263.33
Center	50000	Loading	21.7-5.0-10.0-7.0
Top Chord Size	2x8	Bottom Chord Size	2x8
Top Chord Pitch	4	Bottom Chord Pitch	0
Left Overhang	20000	Right Overhang	20000
Left Stub	0	Right Stub	0
Left Cantilever	0	Right Cantilever	0
Splices	4	Joints	15
Ply	1	Sheathing Area	0.00

Quantity: 2